

# *COMMERCIAL VEHICLE COMPONENTS*

ASIA İNCİ OTOMOTİV SANAYİ VE DİŞ TİC. A.Ş  
Yenişehir Mah. Mustafa Akyol Sk. MVK Work Square  
A Blok K:6 D:188 KURTKÖY / PENDİK / İSTANBUL



**ASIA**  
AUTOMOTIVE

[www.asiaauto.com.tr](http://www.asiaauto.com.tr)

INDEX

TRAILER EQUIPMENT	02
TRAILER EQUIPMENT (Curtains System)	06
HYDRAULIC TAIL LIFTS	08
COMMERCIAL VEHICLE AXLES	10
MOBILE HYDRAULIC APPLICATION	12
SPARE PARTS	14
CONSUMABLES	18
RUBBER & METAL COMPONENTS	20
LIGHTING	24
ELECTRONIC & PLASTIC ACCESSORIES	26
ACCESSORY	30

ABOUT US

ABOUT US

Asia Automotive is a supplier for the automotive industry with a wide product range, especially focused on supplying advanced trailer/box equipment and accessory solutions.

Further Asia Automotive is offering vehicle mounted assembly kit solutions which can be assembled locally such as cargo boxes, ambulances, fire fighters. Offering the whole range of components necessary for the trailer and box assembly Asia Automotive is a partner that will satisfy all the needs of manufacturers.



# TRAILER EQUIPMENT



HINGE



EXTERNAL LOCK SET



LEVER KIT



RECESSED SWING



PUSH HANDLE LOCK



LANDING GEAR



RECESSED DOOR LOCK



LEVER

## TRAILER EQUIPMENT



RECESSED HANDLE LOCK  
WITH KEY



LEVER RETAINER



MEAT HOOK



RING



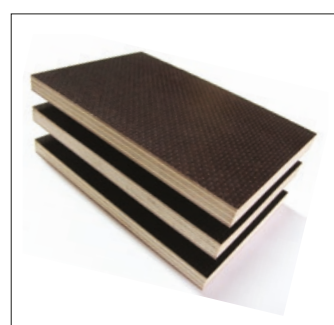
ROLLER BUFFER



STRETCHER WITH  
SCREW



TOOL BOX



PLY WOOD



BOX CONNECTIONS



TAIL LIFT

## TRAILER EQUIPMENT



MUDGUARDS



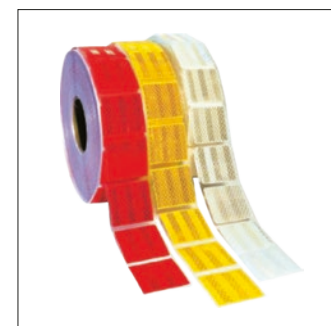
FIRE EXTINGUISHER BOX



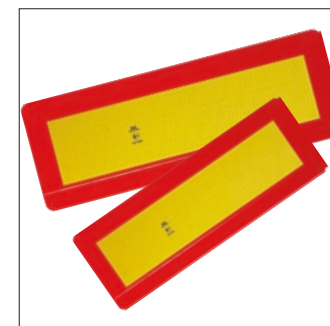
PVC PROFILES



CHOCK



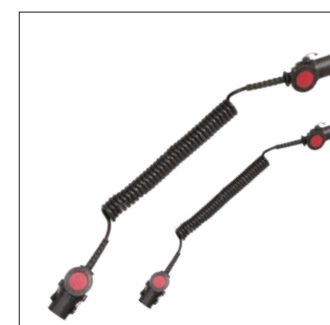
REFLECTIVE TAPE



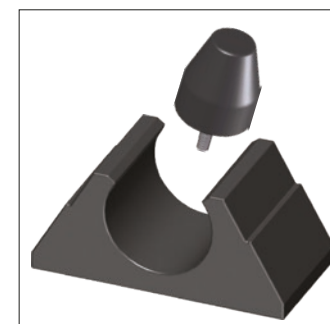
REFLECTORS



SHAFT



TRAILER  
ELECTRICAL CABLES



BUFFERS



WATER TANK



## TRAILER EQUIPMENT

### Sliding Roof and Curtain Systems

Combined rails are made of galvanized steel and curved according to the length



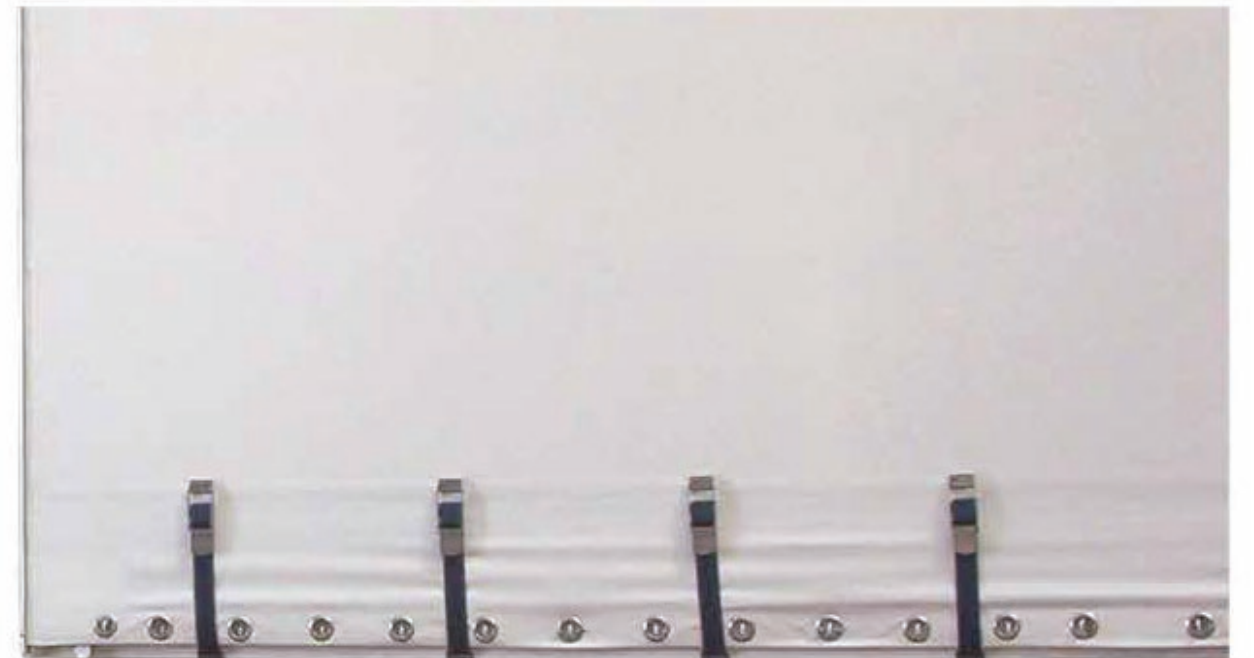
### Speed Curtain Systems



## TRAILER EQUIPMENT

### Sliding Curtain Systems

Fixed roof with aluminum and galvanized steel rail and side curtain systems





HYDRAULIC TAIL LIFT



HYDRAULIC TAIL LIFT



HYDRAULIC TAIL LIFT



DM 1000 SERIES



STV SERIES FOR MINI VANS



DM 1500 SERIES



DM 750 SERIES FOR LIGHT TRUCKS



DM 2000 SERIES



DMG SERIES FOR HEAVY DUTY



DMA 2500/3000 SERIES

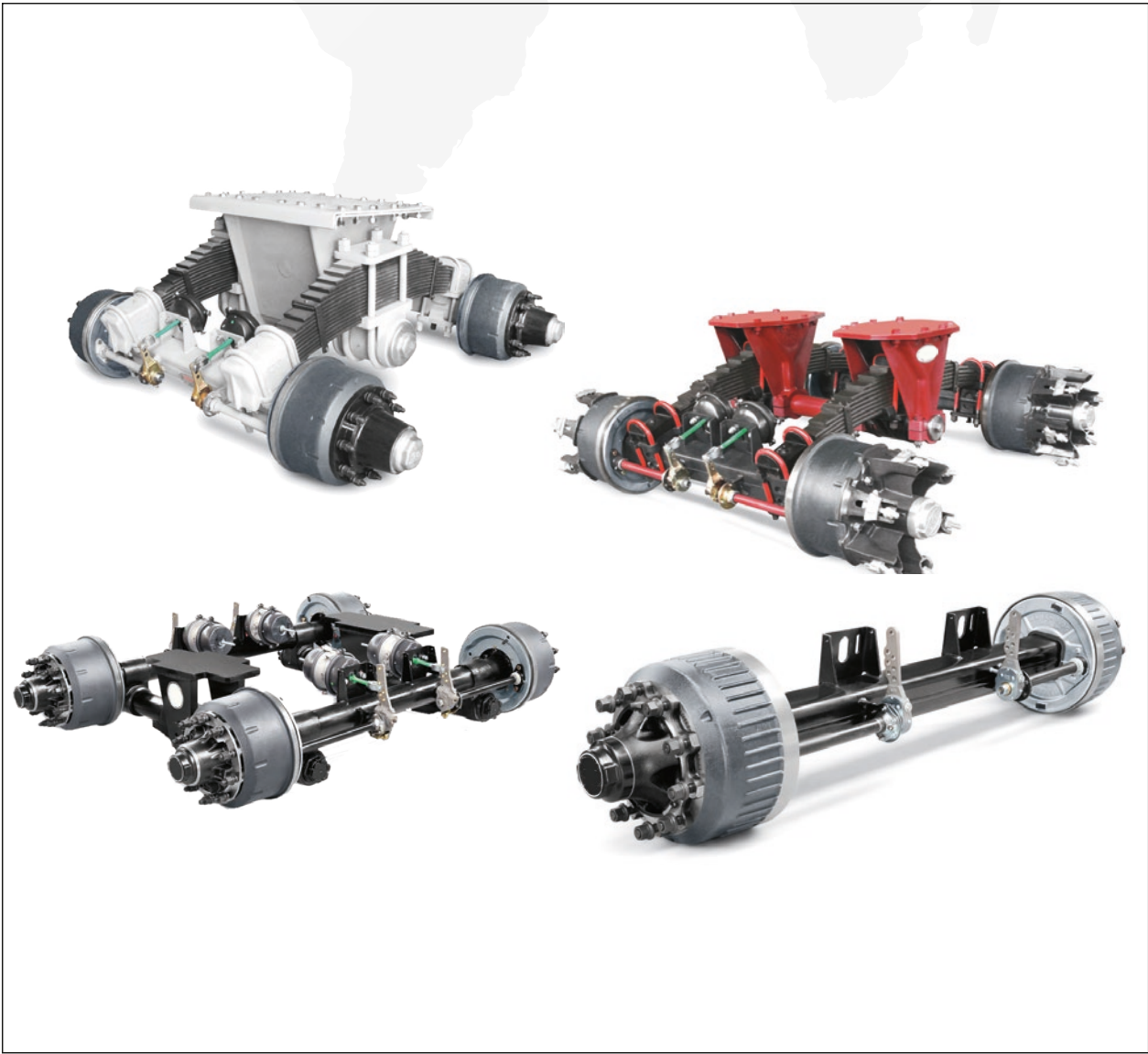


PASSENGER LIFTS





# COMMERCIAL VEHICLE AXLES



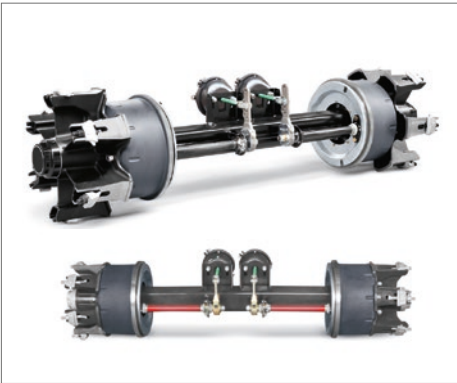
DISC BRAKE AXLES



AIR SUSPENSION AXLE GROUP



HYDRAULIC & SELF STEERING AXLES



MISC RIM TRILEX AXLES



MISC LOWBED AXLES



MISC SWINGING AXLES



MECHANICAL SUSPENSION AXLE GROUP



MISC GROUP OF W-BOGIE AXLES





# MOBILE HYDRAULIC APPLICATIONS



PTOS FOR ALL COMMERCIAL VEHICLE BRANDS



PTOS FOR FIRE FIGHTING & WATER TANK TRUCKS



MISC SPLIT SHAFT UNITS FOR SUPERSTRUCTURES



SANDWICH TYPE SPLIT SHAFT UNITS



HYDROSTATIC SPLIT SHAFT UNITS



HYDRAULIC PUMPS & ACCESSORIES



MISC TRANSFERCASES



SPLIT SHAFT PTO UNITS FOR CONCRETE UNITS



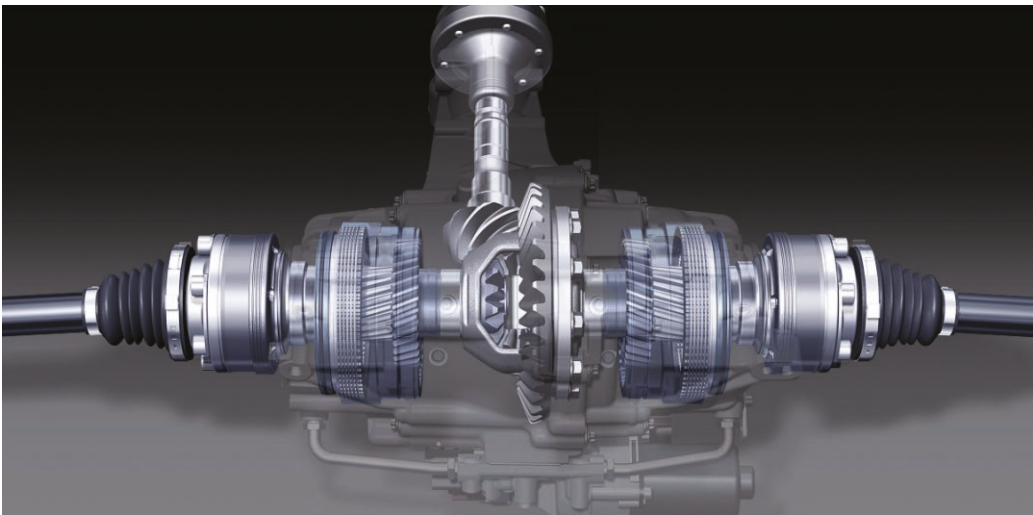
SPARE PARTS



SPARE PARTS



SPARE PARTS



BELT



GASKET



CONNECTING ROD



LINER



DRUM BRAKE LININGS



PISTON SET



FILTERS



PISTON RING SET



SPARE PARTS



SEALING ELEMENTS



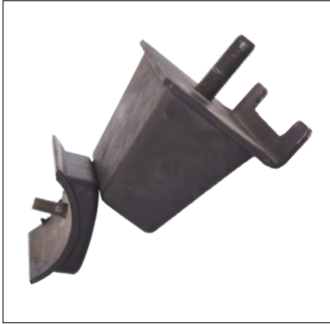
SPRING



SHOCK ABSORBER



STARTER



SPRING MOUNTS AND  
ANTI VIBRATION PARTS



ALTERNATOR



SPRING BUSH



CLUTCH SET

SPARE PARTS



CRANKSHAFT



PINION GEARS



CYLINDER HEAD



RADIATOR



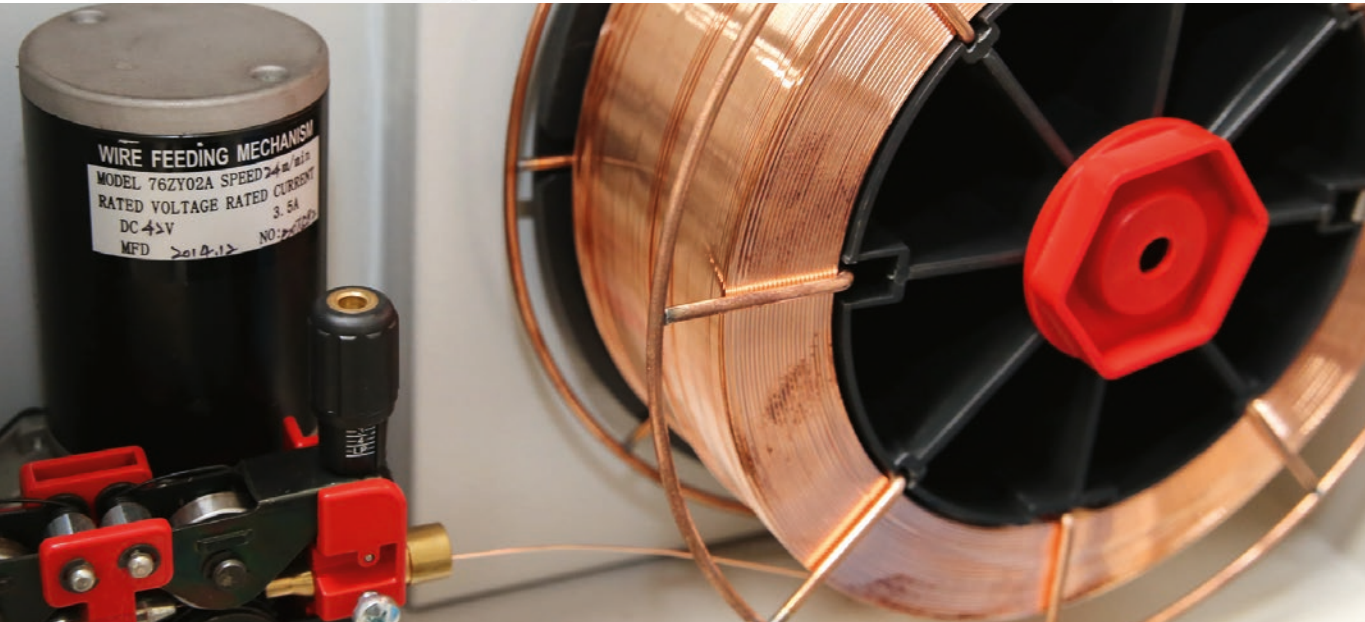
DRUM



WHEEL HUBS



# CONSUMABLES



POLISH & SANDING PAPER



AUTOMOTIVE  
SEALANT AND ADHESIVES



PAINT CHEMICALS  
TOP COAT, PRIMER,  
THINNER, PUTTY ETC.



CLAMPS



CLAMPS



LEVERS



GLOVES



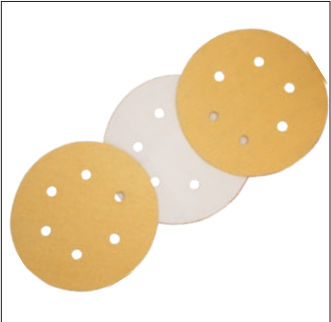
INDUSTRIAL WHEELS



WELDING ELECTRODE



LIFTING SLINGS



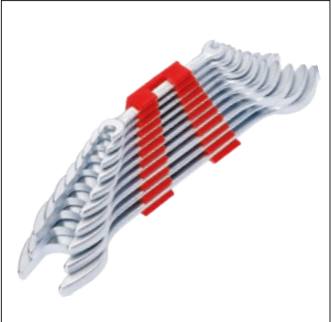
SANDPAPERS



SCREW DRIVERS



TAPES



WRENCHES



WELDING WIRES





# RUBBER & METAL COMPONENTS



AIR TANK



FASTANER BOLT  
SCREW



FITTINGS



BEARINGS



BLIND RIVET



GAS SPRINGS

RUBBER & METAL  
COMPONENTS



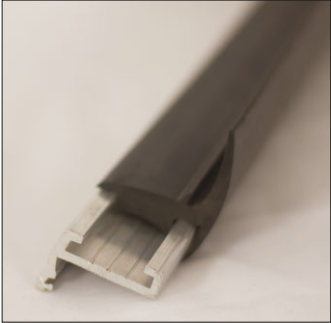
HINGES



TANK COVERS



LOCKS



ALUMINIUM PROFILE



RIVETS NUT



ALUMINIUM PROFILE



RODS



DOOR BUFFERS

RUBBER & METAL  
COMPONENTS



KRAFT HOSES



PIPES OF  
VARIOUS SIZES



VARIOUS HOSES



PRESSURE PIPES  
OF VARIOUS SIZES

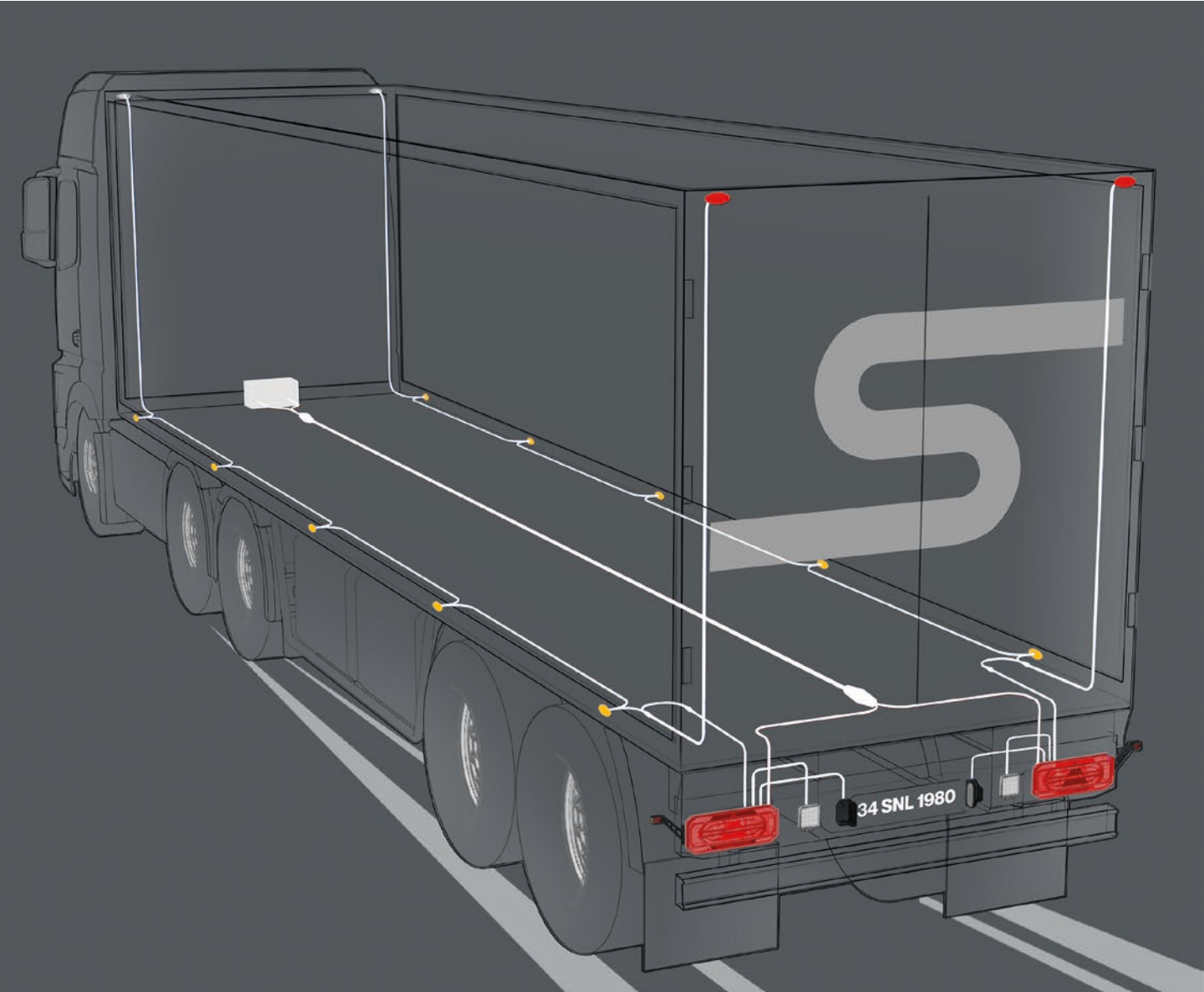


PROFILES





# LIGHTING



HEAD LIGHTS



INTERIOR LIGHTINGS



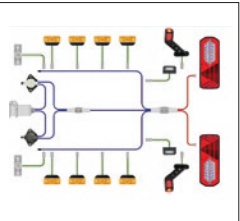
PLATE LIGHTINGS



SPOT LIGHT



POSITION LAMPS



TRAILER LIGHTING SET



REAR LIGHTS



ROTATING BEACONS



REFLECTORS



CEILING LIGHT



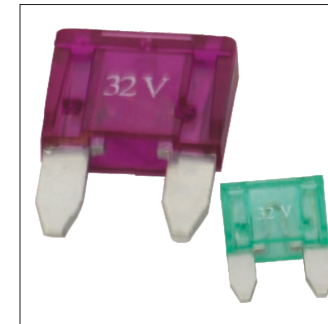
SIGNALS



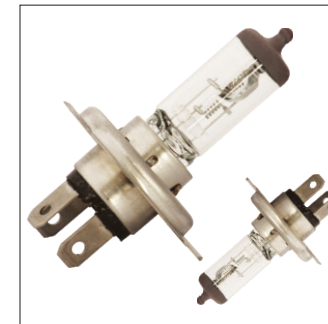
Light Bar & Siren System



## A collection of various electronic components and sensors, including push buttons, a rotary switch, a potentiometer, a buzzer, a motor, and a small display, arranged on a white surface.



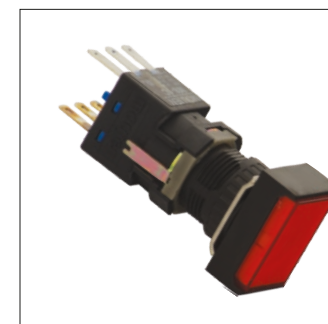
BLADE FUSE



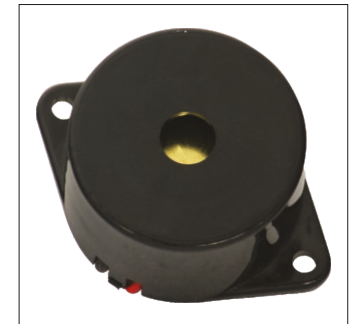
## BULBS



## BULBS



## BUTTONS



BUZZERS



## CONVERTORS



DOOR BELL



EMERGENCY EXIT  
VALVE



ELECTRONIC & PLASTIC  
ACCESSORIES



FLASHERS



PUSH BUTTONS



HARNESSES



RELAYS AND  
WARNINGS



HARNESSES



ROCKER SWITCHES



HORNS



SIRENS

ELECTRONIC & PLASTIC  
ACCESSORIES



STOP BUTTONS



STOP INDICATORS



TOUCH BUTTONS



SWITCHES AND  
SYMBOLS



DOOR HANDS



DESTINATION BOARD



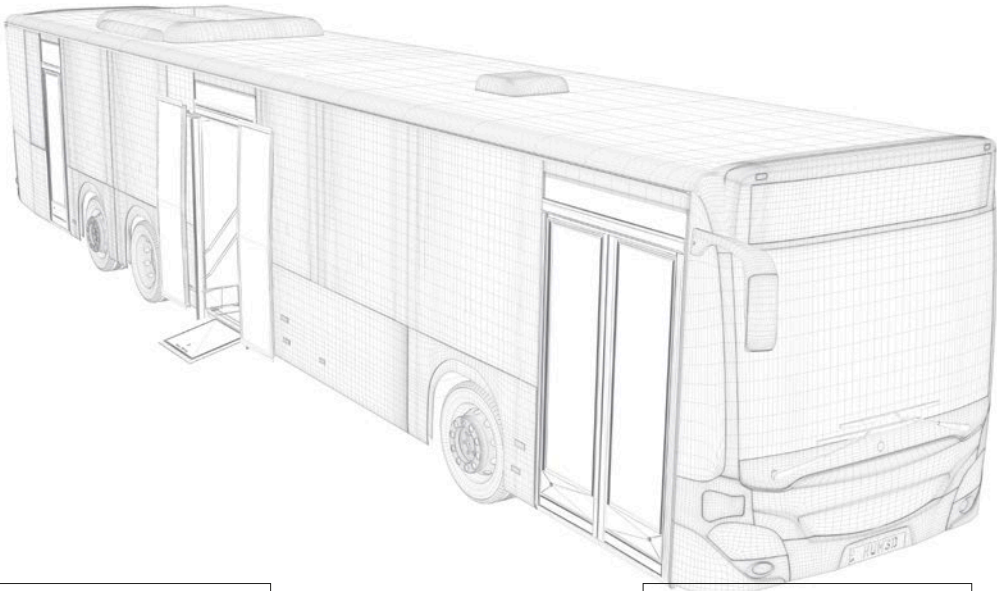
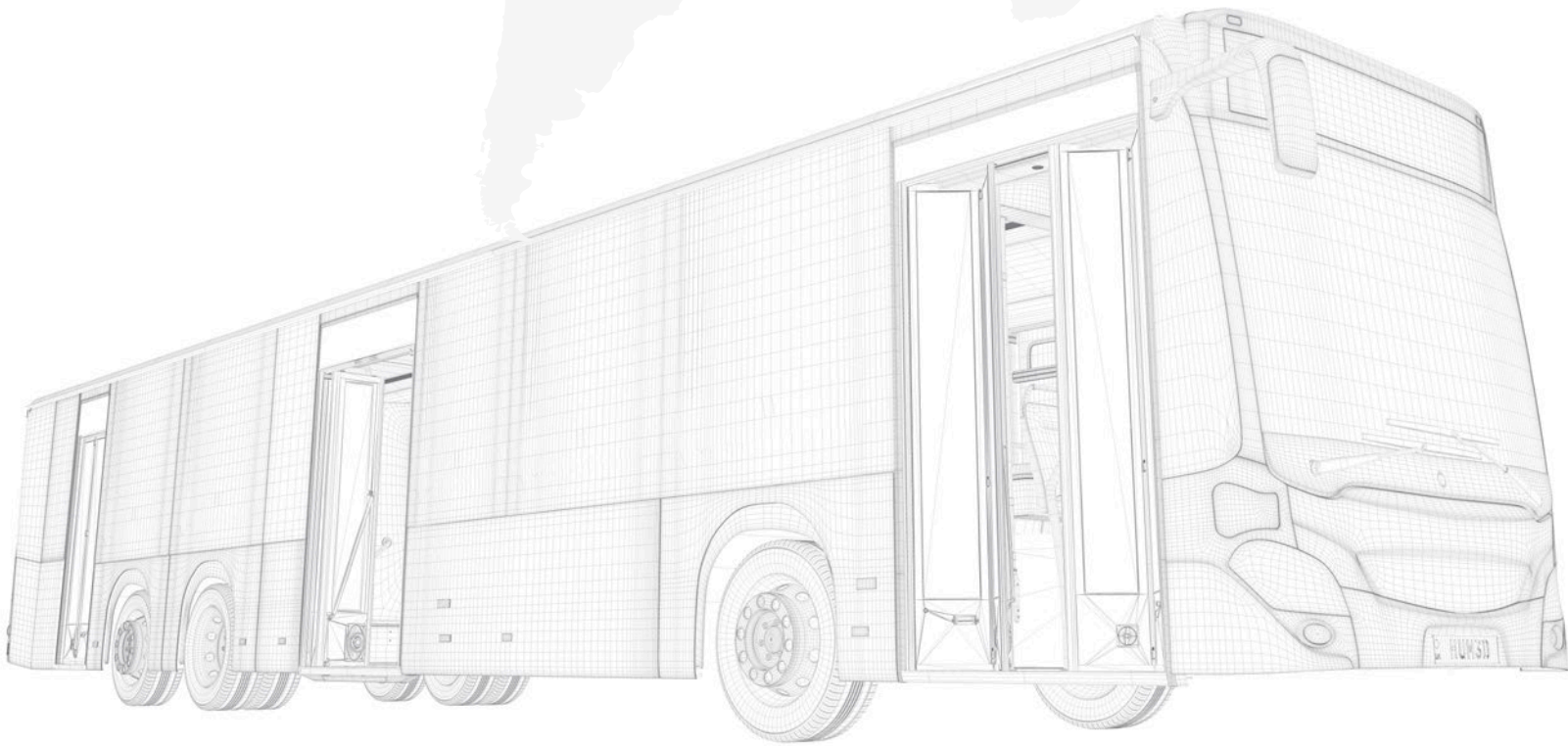
PASSENGER HANDLES



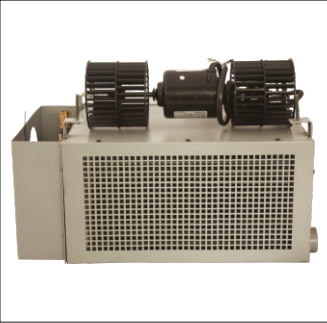
ADVERTISEMENT HANDLES



# BUS COMPONENTS



EMERGENCY EXIT



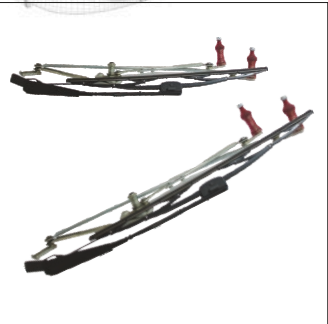
HEATERS



VENTILATION HATCH



WATER TANK



WINDSHIELD WIPER MEC.



WINDSHIELD WIPER



WIPER MOTORS



BLOWERS



ACCESSORY



PASSANGER SEATS  
(PLASTIC)



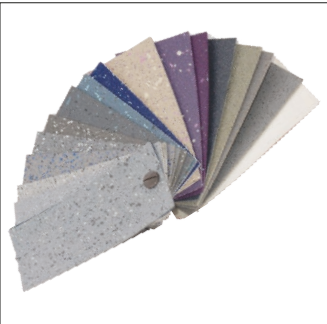
PASSANGER SEATS



DRIVER SEAT



DRIVER SEATS  
(WITH ARMS)



FLOOR COVERINGS



MATS



FRONT BLIND CURTAIN



AIR LOWERS

ACCESSORY



ALUMINIUM  
HOLDINGS



MUDFLAPS



EMERGENCY HAMMERS



SIDE MOLDINGS



HANDLE



FIGURES



MIRRORS



LETTERS